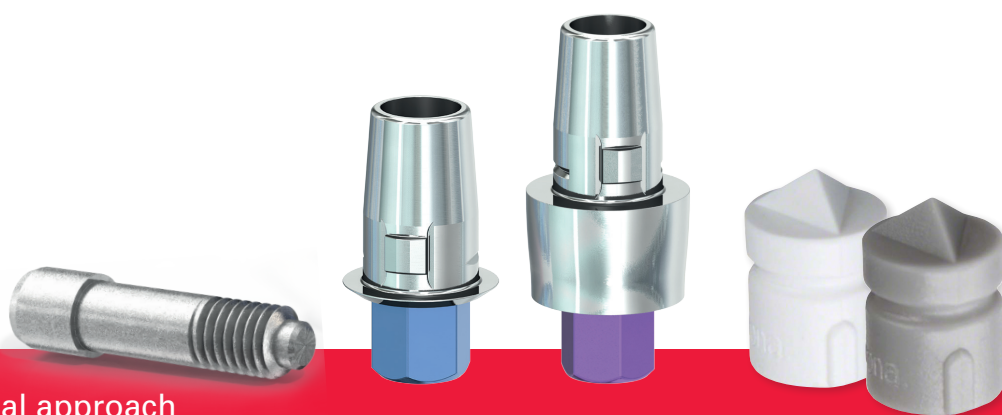


SIC invent (HEX) CEREC Workflow



- Full integration in Sirona CEREC via „Camlog interface“
 - SIC Bonding base blue, CEREC → CAMLOG® 3,8 mm
 - SIC Bonding base red, CEREC → CAMLOG® 4,3 mm
- Sirona Scan Body for SIC invent / CAMLOG®:
 - Sirona Bluecam: **64 31 295** (order number) white
 - Sirona Omnicam or Primescan: **64 31 311** (order number) grey
 - Order scan bodies from Sirona or Depot
- Sirona Blocks: Meso Size S (e. g. E-Max, Zirkon)
- Sirona Guide Block: Size L in conjunction with sleeve 5.2 mm for SIC Guided Surgery with CEREC



The individual approach

SIC invent AG, Birnamngasse 3, 4055 Basel, Switzerland
T +41 (0)61 260 24 60, F +41 (0)61 261 39 68, contact.switzerland@sic-invent.com
SIC invent Deutschland GmbH, T 0800 742 46 83 68, contact.germany@sic-invent.com
SIC invent Austria GmbH, T +43 (0)1 533 70 60, contact.austria@sic-invent.com

www.sic-invent.com

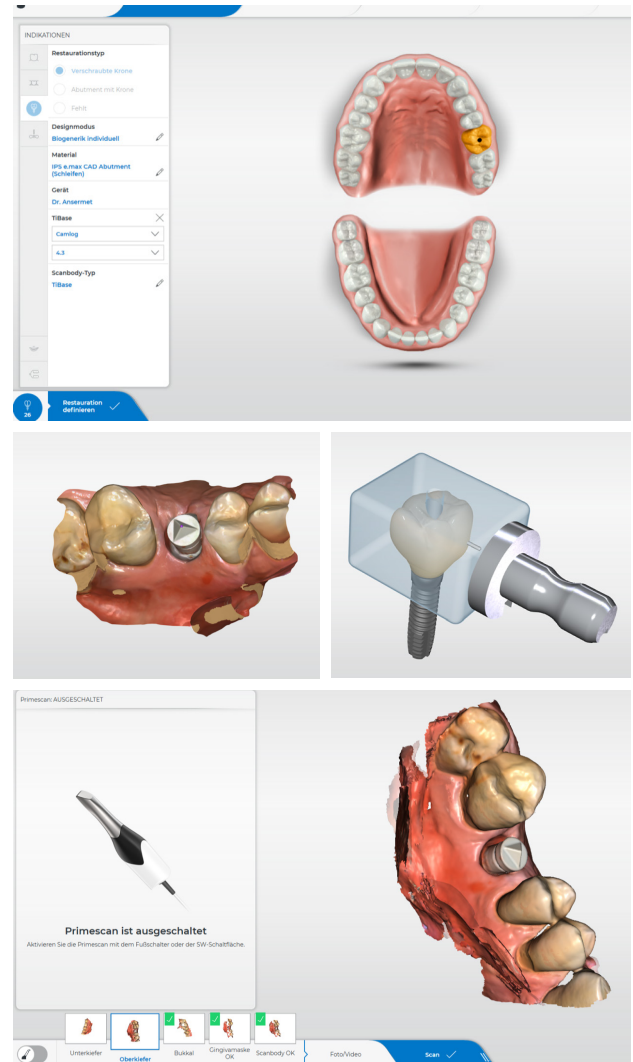


CEREC

– CAD/CAM Bonding Bases - Workflow

1. Administration
2. Restoration
3. Abutment
4. Scanbody Typ
5. Tibase
6. CAMLOG®
7. CAMLOG® 3.8 mm for
SIC Bonding Base blue (936188)
oder CAMLOG® 4.3 mm for
SIC Bonding Base red (936189)
8. Sirona Bluecam Scanbody
(64 31 295) oder
Sirona Omnicam or Primescan
Scanbody (64 31 311) to be used
9. Intraoral scan
10. Abutment Design
Crown design in one or two parts
11. Milling

Always use blocks in size "S"



SIC Bonding Base CAD/CAM, straight, CEREC (incl. SIC Standard Fixation Screw)

Prosthetic connection	GH 0.3 mm		GH 3.0 mm	
	3.3 mm	936188	936228	936229
4.2 mm	936189	936229		

SICace®, SICmax® SICtapered	
Implant	Prosthetics
3.4/3.7 mm	3.3 mm
4.0/4.2 mm	
4.5/4.7 mm	4.2 mm
5.0/5.2 mm	