

# SIC invent CEREC Workflow for SICvantage<sup>®</sup> Implant system



- Full integration in Sirona CEREC via „Camlog interface“
  - SIC Bonding base grey, CEREC → CAMLOG<sup>®</sup> 3.8 mm
  - SIC Bonding base blue, CEREC → CAMLOG<sup>®</sup> 3.8 mm
  - SIC Bonding base red, CEREC → CAMLOG<sup>®</sup> 4.3 mm
- Sirona Scan Body for SIC invent / CAMLOG<sup>®</sup>:
  - Sirona Bluecam: **64 31 295** (order number) white
  - Sirona Omnicam or Primescan: **64 31 311** (order number) grey
  - Order scan bodies from Sirona or Depot
- Sirona Blocks: Meso Size S (e. g. E-Max, Zirkon)
- Sirona Guide Block: Size L in conjunction with sleeve 5.2 mm for SIC Guided Surgery with CEREC



The individual approach

SIC invent AG, Birmanngasse 3, 4055 Basel, Switzerland  
T +41 (0)61 260 24 60, F +41 (0)61 261 39 68, [contact.switzerland@sic-invent.com](mailto:contact.switzerland@sic-invent.com)  
SIC invent Deutschland GmbH, T 0800 742 46 83 68, [contact.germany@sic-invent.com](mailto:contact.germany@sic-invent.com)  
SIC invent Austria GmbH, T +43 (0)1 533 70 60, [contact.austria@sic-invent.com](mailto:contact.austria@sic-invent.com)

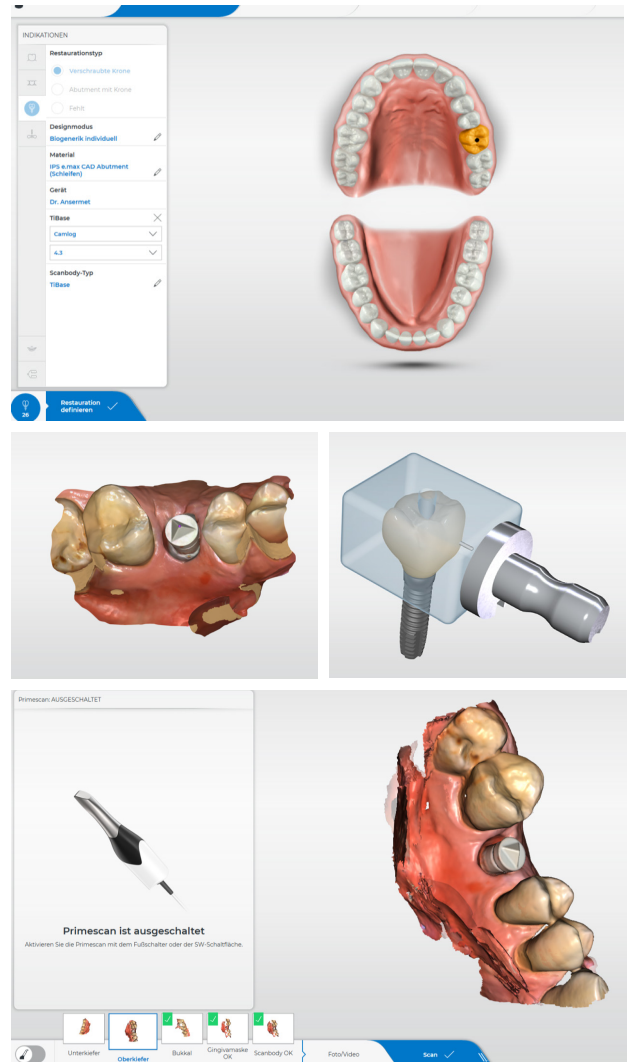
[www.sic-invent.com](http://www.sic-invent.com)



# CEREC

## – CAD/CAM Bonding Bases SICvantage® - Workflow

1. Administration
2. Restoration
3. Abutment
4. Scanbody Typ
5. Tibase
6. CAMLOG®
7. CAMLOG® 3.8 mm for  
SIC Bonding Base grey (950744)  
SIC Bonding Base blue (950764)  
oder CAMLOG® 4.3 mm for  
SIC Bonding Base red (950774)
8. Sirona Bluecam Scanbody  
(64 31 295) oder  
Sirona Omnicam or Primescan  
Scanbody (64 31 311) to be used
9. Intraoral scan
10. Abutment Design/Implant  
Crown design in one or two parts
11. Milling



**Always use blocks in size "S"**

SICvantage Bonding Base CAD/CAM,  
straight, CEREC



Prosthetic connection	GH 1.0 mm	GH 3.0 mm
2.2 mm	950744	–
2.5 mm	950764	950765
2.9 mm	950774	950775

SICvantage® max		SICvantage® tapered	
	Implant		Prosthetics
	3.0 mm		2.2 mm
	3.7 mm		2.5 mm
	4.2 mm		2.9 mm
	4.7 mm		
	5.2 mm		