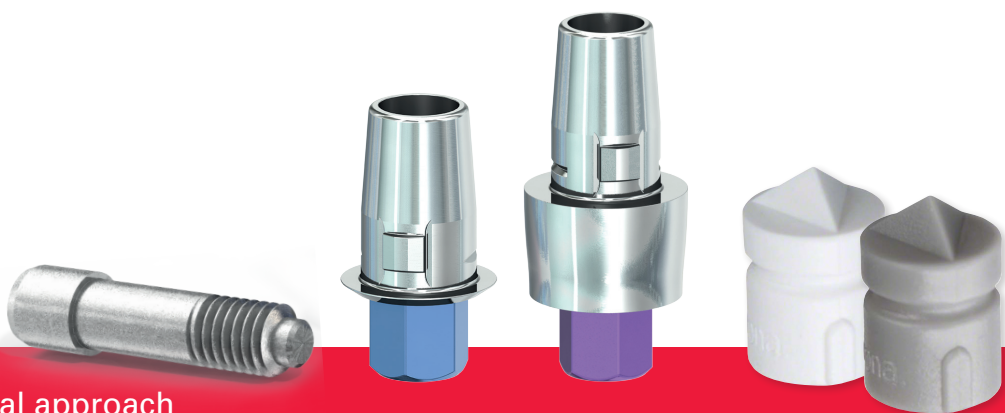


# SIC invent (HEX) CEREC Workflow



- Volle Integration in Sirona CEREC über „Camlog-Schnittstelle“
  - SIC Klebebasis blau, CEREC → CAMLOG® 3,8 mm
  - SIC Klebebasis rot, CEREC → CAMLOG® 4,3 mm
- Sirona Scanbody für SIC invent / CAMLOG®:
  - Sirona Bluecam: **64 31 295** (Bestellnummer) weiss
  - Sirona Omnicam oder Primescan: **64 31 311** (Bestellnummer) grauScanbodies zu bestellen bei Sirona oder Depot
- Abutment Blöcke: Meso Grösse S (z. B. E-Max, Zirkon)
- Sirona Guide Block: Grösse L in Verbindung mit Hülse 5,2 mm für SIC Guided Surgery mit CEREC



The individual approach

SIC invent AG, Birnamngasse 3, CH-4055 Basel, Schweiz  
T +41 (0)61 260 24 60, F +41 (0)61 261 39 68, [contact.switzerland@sic-invent.com](mailto:contact.switzerland@sic-invent.com)  
SIC invent Deutschland GmbH, T 0800 742 46 83 68, [contact.germany@sic-invent.com](mailto:contact.germany@sic-invent.com)  
SIC invent Austria GmbH, T +43 (0)1 533 70 60, [contact.austria@sic-invent.com](mailto:contact.austria@sic-invent.com)

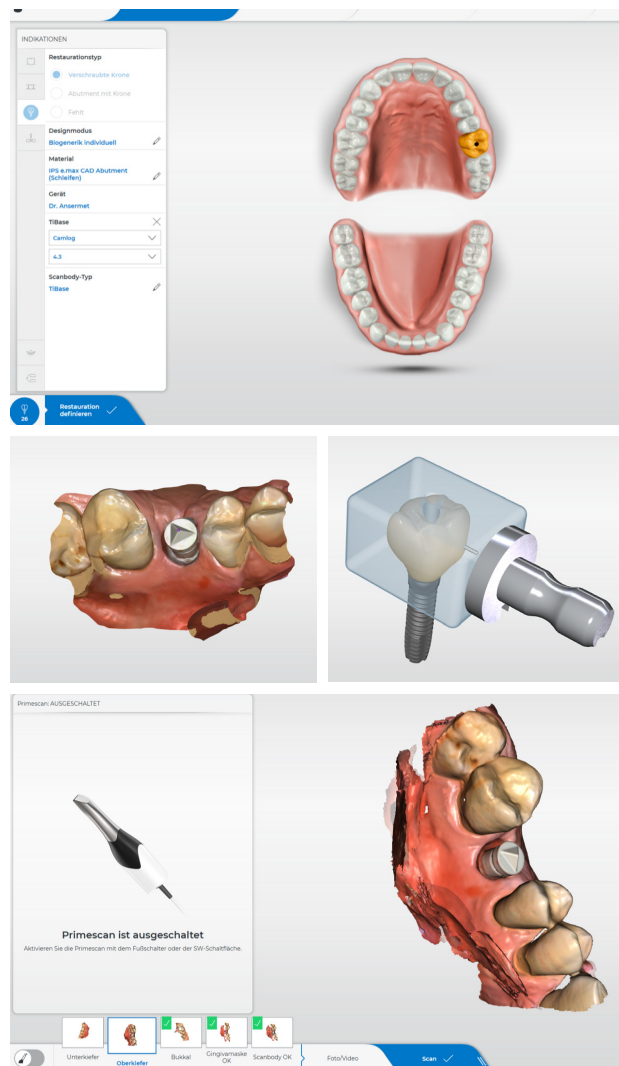
[www.sic-invent.com](http://www.sic-invent.com)



# CEREC

– digitaler Workflow auf SIC Klebebasen



1. Administration
2. Restauration
3. Aufbau
4. Scanbody Typ
5. Tibase
6. CAMLOG®
7. CAMLOG® 3,8 mm für  
SIC Klebebasis blau (936188)  
oder CAMLOG® 4,3 mm für  
SIC Klebebasis rot (936189)
8. Sirona Bluecam Scanbody  
(64 31 295) oder  
Sirona Omnicam oder Primescan  
Scanbody (64 31 311) verwenden
9. Intraoraler Scan
10. Abutment Design/Implantat  
Kronendesign ein- oder zweiteilig
11. Fräsen









**Immer Blöcke in Grösse „S“ verwenden**

SIC Klebebasis CAD/CAM, gerade, CEREC (inkl. SIC Halteschraube-Standard)



Prothetische Verbindung	GH 0.3 mm	GH 3.0 mm
3.3 mm 	936188	936228
4.2 mm 	936189	936229

SICace®, SICmax® SICtapered	
Implantat	Prothetik
 3.4/3.7 mm	 3.3 mm
 4.0/4.2 mm	
 4.5/4.7 mm	 4.2 mm
 5.0/5.2 mm	